



**ROANOKE REGIONAL  
PARTNERSHIP**

Daleville Submarket  
Demographics  
10-12-15 Minutes

TABLE OF CONTENTS

MARKET LOCATION MAP  
MARKET PROFILE  
DEMOGRAPHICS AND INCOME

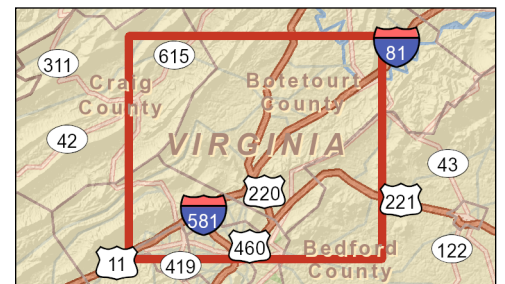
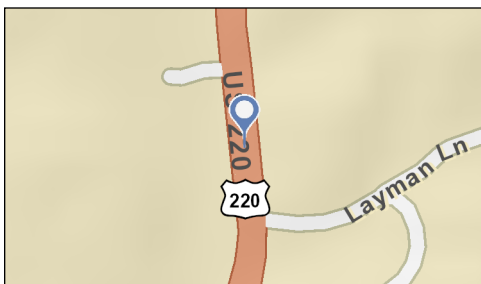
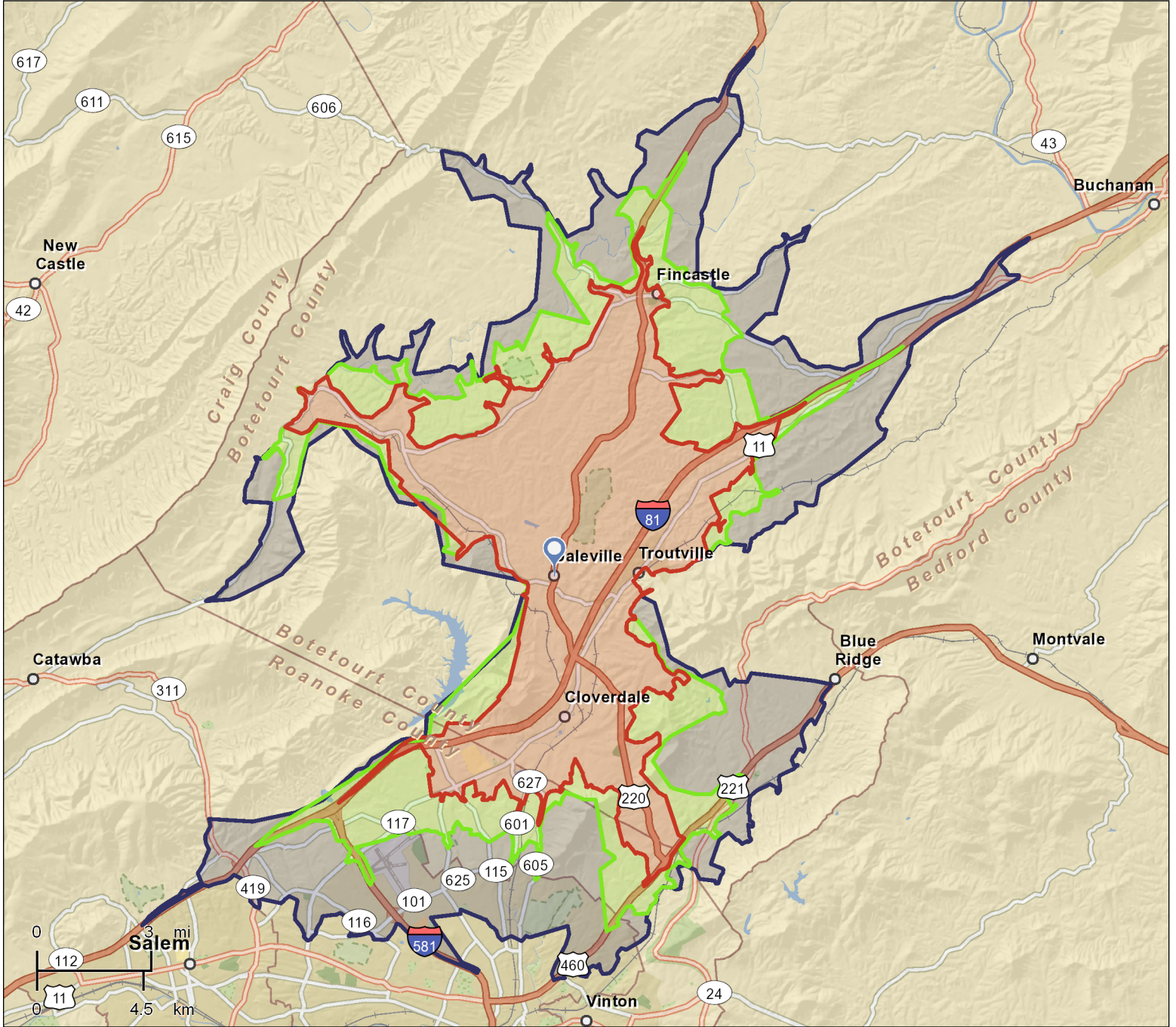


## Market Location



Daleville  
STHY 220, Daleville, VA, 24083  
Drive Time: 10, 12, 15 Minutes

Latitude: 37.41283  
Longitude: -79.91218







# Market Profile

Daleville  
 STHY 220, Daleville, VA, 24083  
 Drive Time: 10 minutes

Latitude: 37.41283  
 Longitude: -79.91218

	0 - 10 minutes	0 - 12 minutes	0 - 15 minutes
<b>Population Summary</b>			
2000 Total Population	13,200	25,172	55,964
2010 Total Population	15,442	29,030	61,700
2012 Total Population	15,699	29,339	62,315
2012 Group Quarters	417	651	1,162
2017 Total Population	15,956	29,719	63,325
2012-2017 Annual Rate	0.33%	0.26%	0.32%
<b>Household Summary</b>			
2000 Households	4,970	9,548	22,475
2000 Average Household Size	2.53	2.52	2.41
2010 Households	6,114	11,494	25,155
2010 Average Household Size	2.46	2.47	2.41
2012 Households	6,195	11,579	25,350
2012 Average Household Size	2.47	2.48	2.41
2017 Households	6,358	11,802	25,818
2017 Average Household Size	2.44	2.46	2.41
2012-2017 Annual Rate	0.52%	0.38%	0.37%
2010 Families	4,520	8,306	17,108
2010 Average Family Size	2.88	2.92	2.91
2012 Families	4,547	8,297	17,078
2012 Average Family Size	2.89	2.93	2.92
2017 Families	4,673	8,463	17,414
2017 Average Family Size	2.87	2.92	2.92
2012-2017 Annual Rate	0.55%	0.40%	0.39%
<b>Housing Unit Summary</b>			
2000 Housing Units	5,175	9,914	23,420
Owner Occupied Housing Units	84.3%	82.5%	74.6%
Renter Occupied Housing Units	11.8%	13.8%	21.4%
Vacant Housing Units	4.0%	3.7%	4.0%
2010 Housing Units	6,559	12,224	26,795
Owner Occupied Housing Units	77.8%	77.7%	71.0%
Renter Occupied Housing Units	15.4%	16.4%	22.9%
Vacant Housing Units	6.8%	6.0%	6.1%
2012 Housing Units	6,673	12,362	27,054
Owner Occupied Housing Units	75.9%	75.6%	68.8%
Renter Occupied Housing Units	16.9%	18.1%	24.9%
Vacant Housing Units	7.2%	6.3%	6.3%
2017 Housing Units	6,890	12,665	27,632
Owner Occupied Housing Units	76.0%	75.8%	69.2%
Renter Occupied Housing Units	16.2%	17.3%	24.2%
Vacant Housing Units	7.7%	6.8%	6.6%
<b>Median Household Income</b>			
2012	\$67,555	\$62,198	\$53,039
2017	\$78,187	\$75,316	\$59,860
<b>Median Home Value</b>			
2012	\$222,172	\$210,147	\$178,557
2017	\$248,434	\$234,969	\$195,897
<b>Per Capita Income</b>			
2012	\$33,546	\$31,560	\$27,508
2017	\$37,430	\$35,119	\$30,267
<b>Median Age</b>			
2010	44.1	43.7	42.5
2012	44.7	44.2	43.0
2017	45.7	45.3	43.9

**Data Note:** Household population includes persons not residing in group quarters. Average Household Size is the household population divided by total households. Persons in families include the householder and persons related to the householder by birth, marriage, or adoption. Per Capita Income represents the income received by all persons aged 15 years and over divided by the total population.

**Source:** U.S. Census Bureau, Census 2010 Summary File 1. Esri forecasts for 2012 and 2017. Esri converted Census 2000 data into 2010 geography.



# Market Profile

Daleville  
 STHY 220, Daleville, VA, 24083  
 Drive Time: 15 minutes

Latitude: 37.41283  
 Longitude: -79.91218

	0 - 10 minutes	0 - 12 minutes	0 - 15 minutes
<b>2012 Households by Income</b>			
Household Income Base	6,195	11,579	25,350
<\$15,000	7.2%	6.9%	9.1%
\$15,000 - \$24,999	5.8%	6.0%	7.9%
\$25,000 - \$34,999	8.0%	10.8%	12.7%
\$35,000 - \$49,999	12.9%	13.8%	16.2%
\$50,000 - \$74,999	20.6%	21.2%	22.6%
\$75,000 - \$99,999	19.1%	18.5%	15.9%
\$100,000 - \$149,999	13.7%	13.4%	10.0%
\$150,000 - \$199,999	8.1%	5.9%	3.4%
\$200,000+	4.6%	3.5%	2.2%
Average Household Income	\$84,380	\$78,096	\$66,168
<b>2017 Households by Income</b>			
Household Income Base	6,358	11,802	25,818
<\$15,000	6.9%	6.7%	9.5%
\$15,000 - \$24,999	4.3%	4.4%	6.2%
\$25,000 - \$34,999	6.1%	8.5%	10.3%
\$35,000 - \$49,999	10.4%	11.3%	13.8%
\$50,000 - \$74,999	17.6%	18.6%	20.6%
\$75,000 - \$99,999	25.5%	24.9%	22.0%
\$100,000 - \$149,999	15.2%	15.0%	11.3%
\$150,000 - \$199,999	9.6%	7.1%	4.1%
\$200,000+	4.4%	3.5%	2.2%
Average Household Income	\$93,544	\$86,520	\$72,745
<b>2012 Owner Occupied Housing Units by Value</b>			
Total	5,064	9,344	18,619
<\$50,000	0.9%	0.7%	0.7%
\$50,000 - \$99,999	7.5%	5.7%	8.0%
\$100,000 - \$149,999	13.0%	14.7%	25.8%
\$150,000 - \$199,999	20.4%	24.9%	27.0%
\$200,000 - \$249,999	18.7%	19.7%	16.3%
\$250,000 - \$299,999	13.3%	12.8%	9.1%
\$300,000 - \$399,999	16.3%	13.8%	8.7%
\$400,000 - \$499,999	6.6%	5.0%	2.9%
\$500,000 - \$749,999	3.1%	2.3%	1.3%
\$750,000 - \$999,999	0.4%	0.2%	0.2%
\$1,000,000 +	0.0%	0.0%	0.0%
Average Home Value	\$245,323	\$234,018	\$200,525
<b>2017 Owner Occupied Housing Units by Value</b>			
Total	5,239	9,606	19,125
<\$50,000	0.6%	0.4%	0.5%
\$50,000 - \$99,999	5.1%	3.8%	6.6%
\$100,000 - \$149,999	8.1%	9.4%	20.5%
\$150,000 - \$199,999	15.9%	20.3%	24.4%
\$200,000 - \$249,999	21.0%	22.9%	19.8%
\$250,000 - \$299,999	16.3%	16.0%	11.6%
\$300,000 - \$399,999	17.0%	14.7%	9.3%
\$400,000 - \$499,999	9.9%	7.7%	4.5%
\$500,000 - \$749,999	5.5%	4.2%	2.4%
\$750,000 - \$999,999	0.6%	0.5%	0.3%
\$1,000,000 +	0.0%	0.0%	0.0%
Average Home Value	\$278,230	\$262,718	\$220,708

**Data Note:** Income represents the preceding year, expressed in current dollars. Household income includes wage and salary earnings, interest dividends, net rents, pensions, SSI and welfare payments, child support, and alimony.  
**Source:** U.S. Census Bureau, Census 2010 Summary File 1. Esri forecasts for 2012 and 2017. Esri converted Census 2000 data into 2010 geography.



# Market Profile

Daleville  
 STHY 220, Daleville, VA, 24083  
 Drive Time: 15 minutes

Latitude: 37.41283  
 Longitude: -79.91218

	0 - 10 minutes	0 - 12 minutes	0 - 15 minutes
<b>2010 Population by Age</b>			
Total	15,446	29,028	61,703
0 - 4	5.0%	5.0%	5.7%
5 - 9	6.2%	6.2%	6.0%
10 - 14	7.2%	7.1%	6.3%
15 - 24	11.6%	11.4%	11.3%
25 - 34	8.0%	8.8%	10.8%
35 - 44	13.1%	13.5%	13.3%
45 - 54	16.5%	16.0%	15.1%
55 - 64	15.4%	15.3%	14.4%
65 - 74	9.3%	9.2%	8.8%
75 - 84	5.7%	5.8%	5.9%
85 +	1.8%	1.8%	2.3%
18 +	77.5%	77.6%	78.1%
<b>2012 Population by Age</b>			
Total	15,699	29,339	62,315
0 - 4	5.0%	5.0%	5.7%
5 - 9	6.2%	6.1%	5.9%
10 - 14	7.0%	6.9%	6.2%
15 - 24	11.4%	11.1%	11.1%
25 - 34	8.1%	8.8%	11.0%
35 - 44	12.7%	13.1%	12.9%
45 - 54	16.0%	15.5%	14.6%
55 - 64	16.1%	16.0%	15.0%
65 - 74	9.9%	9.8%	9.3%
75 - 84	5.7%	5.7%	5.8%
85 +	1.9%	1.9%	2.4%
18 +	77.9%	78.1%	78.5%
<b>2017 Population by Age</b>			
Total	15,956	29,719	63,327
0 - 4	5.0%	4.9%	5.7%
5 - 9	6.1%	6.0%	5.8%
10 - 14	7.0%	6.9%	6.1%
15 - 24	10.7%	10.5%	10.4%
25 - 34	8.0%	8.8%	11.0%
35 - 44	12.2%	12.5%	12.4%
45 - 54	14.6%	14.2%	13.4%
55 - 64	16.7%	16.5%	15.5%
65 - 74	11.8%	11.7%	11.1%
75 - 84	5.9%	6.0%	6.1%
85 +	2.0%	2.0%	2.5%
18 +	78.2%	78.4%	78.9%
<b>2010 Population by Sex</b>			
Males	7,407	13,892	29,418
Females	8,035	15,138	32,282
<b>2012 Population by Sex</b>			
Males	7,555	14,080	29,779
Females	8,144	15,260	32,537
<b>2017 Population by Sex</b>			
Males	7,696	14,284	30,290
Females	8,260	15,435	33,035

Source: U.S. Census Bureau, Census 2010 Summary File 1. Esri forecasts for 2012 and 2017. Esri converted Census 2000 data into 2010 geography.

June 21, 2013

Made with Esri Business Analyst



# Market Profile

Daleville  
 STHY 220, Daleville, VA, 24083  
 Drive Time: 15 minutes

Latitude: 37.41283  
 Longitude: -79.91218

	0 - 10 minutes	0 - 12 minutes	0 - 15 minutes
<b>2010 Population by Race/Ethnicity</b>			
Total	15,443	29,029	61,700
White Alone	92.7%	91.3%	83.8%
Black Alone	4.2%	5.1%	10.6%
American Indian Alone	0.2%	0.2%	0.2%
Asian Alone	1.4%	1.9%	2.2%
Pacific Islander Alone	0.0%	0.0%	0.0%
Some Other Race Alone	0.3%	0.4%	1.6%
Two or More Races	1.1%	1.2%	1.6%
Hispanic Origin	1.7%	1.9%	4.1%
Diversity Index	16.7	19.6	34.3
<b>2012 Population by Race/Ethnicity</b>			
Total	15,701	29,339	62,315
White Alone	92.3%	90.7%	83.2%
Black Alone	4.6%	5.5%	10.9%
American Indian Alone	0.2%	0.2%	0.2%
Asian Alone	1.4%	1.9%	2.2%
Pacific Islander Alone	0.0%	0.0%	0.0%
Some Other Race Alone	0.4%	0.5%	1.7%
Two or More Races	1.1%	1.2%	1.7%
Hispanic Origin	2.0%	2.3%	4.5%
Diversity Index	18.0	21.0	35.5
<b>2017 Population by Race/Ethnicity</b>			
Total	15,957	29,718	63,326
White Alone	91.2%	89.3%	81.6%
Black Alone	5.2%	6.4%	11.8%
American Indian Alone	0.3%	0.2%	0.3%
Asian Alone	1.5%	2.1%	2.4%
Pacific Islander Alone	0.0%	0.0%	0.0%
Some Other Race Alone	0.5%	0.6%	2.0%
Two or More Races	1.2%	1.4%	1.9%
Hispanic Origin	2.8%	3.1%	5.6%
Diversity Index	21.1	24.7	39.2
<b>2010 Population by Relationship and Household Type</b>			
Total	15,442	29,030	61,700
In Households	97.3%	97.8%	98.1%
In Family Households	85.5%	85.0%	82.6%
Householder	28.8%	28.7%	27.7%
Spouse	24.7%	24.3%	21.9%
Child	28.7%	28.5%	28.3%
Other relative	2.1%	2.2%	2.8%
Nonrelative	1.3%	1.3%	1.8%
In Nonfamily Households	11.8%	12.8%	15.5%
In Group Quarters	2.7%	2.2%	1.9%
Institutionalized Population	0.5%	0.6%	1.1%
Noninstitutionalized Population	2.2%	1.7%	0.8%

**Data Note:** Persons of Hispanic Origin may be of any race. The Diversity Index measures the probability that two people from the same area will be from different race/ethnic groups.

**Source:** U.S. Census Bureau, Census 2010 Summary File 1. Esri forecasts for 2012 and 2017. Esri converted Census 2000 data into 2010 geography.



# Market Profile

Daleville  
 STHY 220, Daleville, VA, 24083  
 Drive Time: 15 minutes

Latitude: 37.41283  
 Longitude: -79.91218

	0 - 10 minutes	0 - 12 minutes	0 - 15 minutes
<b>2010 Households by Type</b>			
Total	6,114	11,494	25,155
Households with 1 Person	22.5%	23.9%	27.0%
Households with 2+ People	77.5%	76.1%	73.0%
Family Households	73.9%	72.3%	68.0%
Husband-wife Families	63.5%	61.1%	53.8%
With Related Children	25.1%	24.2%	21.2%
Other Family (No Spouse Present)	10.4%	11.1%	14.2%
Other Family with Male Householder	2.9%	2.9%	3.7%
With Related Children	1.7%	1.7%	2.1%
Other Family with Female Householder	7.5%	8.2%	10.5%
With Related Children	4.7%	5.0%	6.6%
Nonfamily Households	3.6%	3.8%	5.0%
All Households with Children	31.7%	31.3%	30.3%
Multigenerational Households	2.9%	2.9%	3.2%
Unmarried Partner Households	4.0%	4.0%	5.0%
Male-female	3.4%	3.4%	4.4%
Same-sex	0.7%	0.7%	0.7%
<b>2010 Households by Size</b>			
Total	6,116	11,495	25,154
1 Person Household	22.4%	23.9%	27.0%
2 Person Household	39.1%	38.5%	36.9%
3 Person Household	15.8%	16.0%	16.0%
4 Person Household	14.8%	14.0%	12.5%
5 Person Household	5.3%	5.2%	5.0%
6 Person Household	1.9%	1.7%	1.8%
7 + Person Household	0.6%	0.7%	0.8%
<b>2010 Households by Tenure and Mortgage Status</b>			
Total	6,114	11,494	25,155
Owner Occupied	83.5%	82.6%	75.6%
Owned with a Mortgage/Loan	58.4%	58.2%	53.9%
Owned Free and Clear	25.1%	24.4%	21.7%
Renter Occupied	16.5%	17.4%	24.4%

**Data Note:** Households with children include any households with people under age 18, related or not. Multigenerational households are families with 3 or more parent-child relationships. Unmarried partner households are usually classified as nonfamily households unless there is another member of the household related to the householder. Multigenerational and unmarried partner households are reported only to the tract level. Esri estimated block group data, which is used to estimate polygons or non-standard geography.

**Source:** U.S. Census Bureau, Census 2010 Summary File 1. Esri forecasts for 2012 and 2017. Esri converted Census 2000 data into 2010 geography.





# Demographic and Income Profile

Daleville  
 STHY 220, Daleville, VA, 24083  
 Drive Time: 10 minutes

Latitude: 37.41283  
 Longitude: -79.91218

Summary	Census 2010	2012	2017
Population	15,442	15,699	15,956
Households	6,114	6,195	6,358
Families	4,520	4,547	4,673
Average Household Size	2.46	2.47	2.44
Owner Occupied Housing Units	5,105	5,064	5,239
Renter Occupied Housing Units	1,009	1,131	1,118
Median Age	44.1	44.7	45.7
Trends: 2012 - 2017 Annual Rate	Area	State	National
Population	0.33%	0.87%	0.68%
Households	0.52%	0.91%	0.74%
Families	0.55%	0.94%	0.72%
Owner HHs	0.68%	1.04%	0.91%
Median Household Income	2.97%	2.92%	2.55%

Households by Income	2012		2017	
	Number	Percent	Number	Percent
<\$15,000	444	7.2%	440	6.9%
\$15,000 - \$24,999	362	5.8%	272	4.3%
\$25,000 - \$34,999	497	8.0%	387	6.1%
\$35,000 - \$49,999	802	12.9%	659	10.4%
\$50,000 - \$74,999	1,277	20.6%	1,119	17.6%
\$75,000 - \$99,999	1,181	19.1%	1,622	25.5%
\$100,000 - \$149,999	847	13.7%	966	15.2%
\$150,000 - \$199,999	500	8.1%	611	9.6%
\$200,000+	284	4.6%	282	4.4%
Median Household Income	\$67,555		\$78,187	
Average Household Income	\$84,380		\$93,544	
Per Capita Income	\$33,546		\$37,430	

Population by Age	Census 2010		2012		2017	
	Number	Percent	Number	Percent	Number	Percent
0 - 4	777	5.0%	787	5.0%	791	5.0%
5 - 9	962	6.2%	970	6.2%	970	6.1%
10 - 14	1,108	7.2%	1,106	7.0%	1,122	7.0%
15 - 19	1,053	6.8%	1,026	6.5%	992	6.2%
20 - 24	746	4.8%	764	4.9%	721	4.5%
25 - 34	1,237	8.0%	1,269	8.1%	1,275	8.0%
35 - 44	2,025	13.1%	1,995	12.7%	1,946	12.2%
45 - 54	2,546	16.5%	2,509	16.0%	2,333	14.6%
55 - 64	2,384	15.4%	2,525	16.1%	2,659	16.7%
65 - 74	1,438	9.3%	1,556	9.9%	1,883	11.8%
75 - 84	883	5.7%	893	5.7%	945	5.9%
85+	280	1.8%	299	1.9%	319	2.0%

Race and Ethnicity	Census 2010		2012		2017	
	Number	Percent	Number	Percent	Number	Percent
White Alone	14,317	92.7%	14,485	92.3%	14,549	91.2%
Black Alone	652	4.2%	715	4.6%	832	5.2%
American Indian Alone	32	0.2%	34	0.2%	44	0.3%
Asian Alone	214	1.4%	223	1.4%	246	1.5%
Pacific Islander Alone	4	0.0%	5	0.0%	5	0.0%
Some Other Race Alone	54	0.3%	63	0.4%	85	0.5%
Two or More Races	170	1.1%	176	1.1%	196	1.2%
Hispanic Origin (Any Race)	265	1.7%	320	2.0%	447	2.8%

**Data Note:** Income is expressed in current dollars.

**Source:** U.S. Census Bureau, Census 2010 Summary File 1. Esri forecasts for 2012 and 2017.

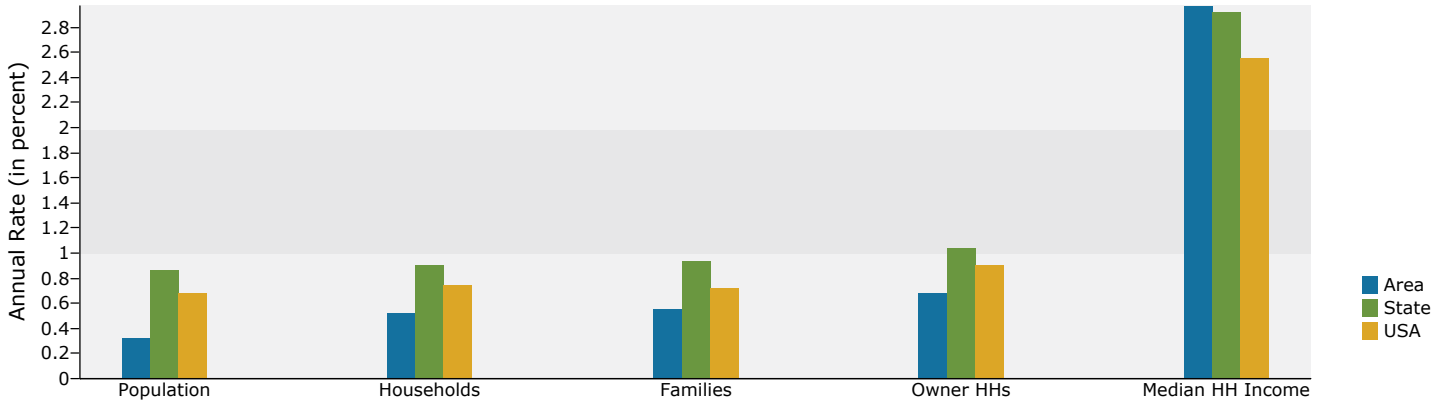


# Demographic and Income Profile

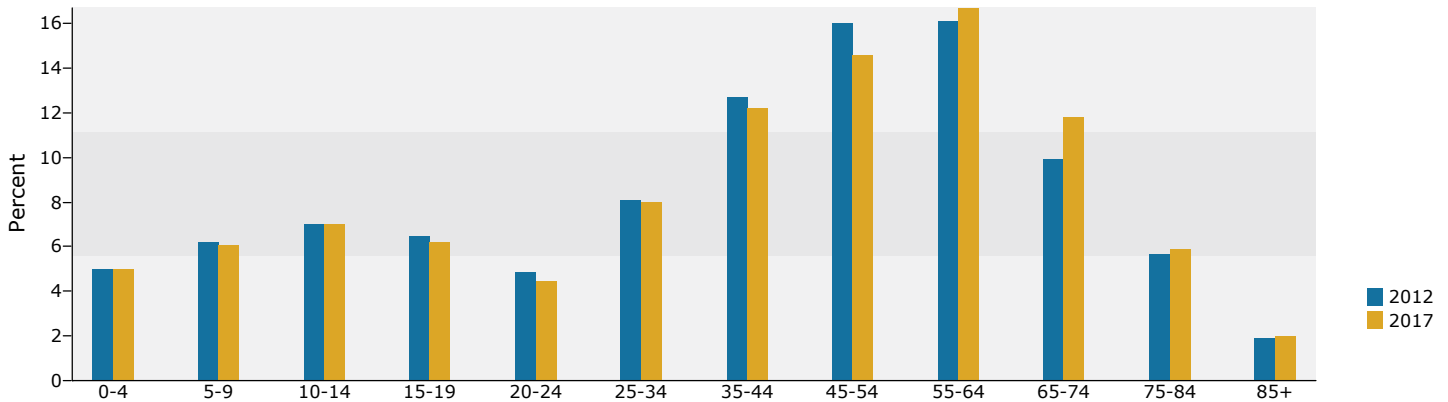
Daleville  
 STHY 220, Daleville, VA, 24083  
 Drive Time: 10 minutes

Latitude: 37.41283  
 Longitude: -79.91218

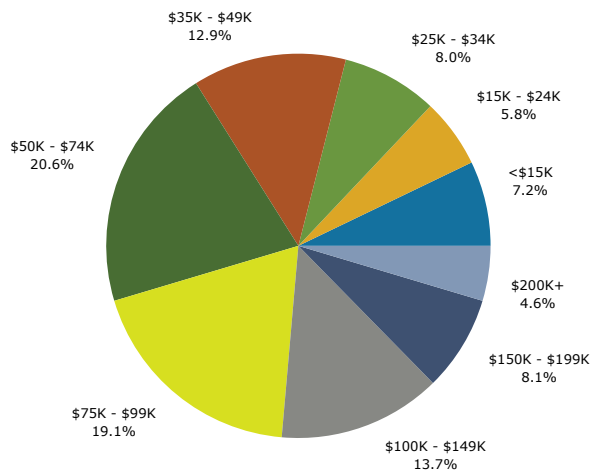
## Trends 2012-2017



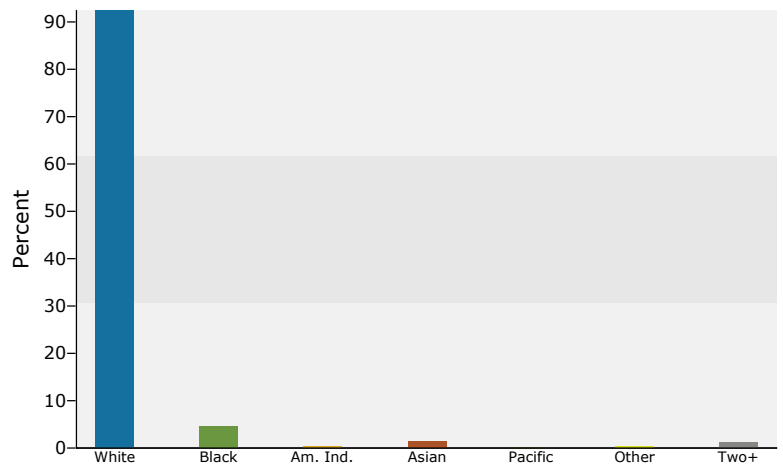
## Population by Age



## 2012 Household Income



## 2012 Population by Race



2012 Percent Hispanic Origin: 2.0%

Source: U.S. Census Bureau, Census 2010 Summary File 1. Esri forecasts for 2012 and 2017.



# Demographic and Income Profile

Daleville  
 STHY 220, Daleville, VA, 24083  
 Drive Time: 12 minutes

Latitude: 37.41283  
 Longitude: -79.91218

Summary	Census 2010	2012	2017
Population	29,030	29,339	29,719
Households	11,494	11,579	11,802
Families	8,306	8,297	8,463
Average Household Size	2.47	2.48	2.46
Owner Occupied Housing Units	9,492	9,344	9,606
Renter Occupied Housing Units	2,002	2,235	2,197
Median Age	43.7	44.2	45.3
Trends: 2012 - 2017 Annual Rate	Area	State	National
Population	0.26%	0.87%	0.68%
Households	0.38%	0.91%	0.74%
Families	0.40%	0.94%	0.72%
Owner HHs	0.55%	1.04%	0.91%
Median Household Income	3.90%	2.92%	2.55%

Households by Income	2012		2017	
	Number	Percent	Number	Percent
<\$15,000	798	6.9%	796	6.7%
\$15,000 - \$24,999	691	6.0%	525	4.4%
\$25,000 - \$34,999	1,252	10.8%	998	8.5%
\$35,000 - \$49,999	1,600	13.8%	1,332	11.3%
\$50,000 - \$74,999	2,458	21.2%	2,191	18.6%
\$75,000 - \$99,999	2,140	18.5%	2,942	24.9%
\$100,000 - \$149,999	1,550	13.4%	1,767	15.0%
\$150,000 - \$199,999	680	5.9%	838	7.1%
\$200,000+	411	3.5%	413	3.5%
Median Household Income	\$62,198		\$75,316	
Average Household Income	\$78,096		\$86,520	
Per Capita Income	\$31,560		\$35,119	

Population by Age	Census 2010		2012		2017	
	Number	Percent	Number	Percent	Number	Percent
0 - 4	1,453	5.0%	1,460	5.0%	1,462	4.9%
5 - 9	1,793	6.2%	1,795	6.1%	1,785	6.0%
10 - 14	2,048	7.1%	2,031	6.9%	2,048	6.9%
15 - 19	1,950	6.7%	1,884	6.4%	1,816	6.1%
20 - 24	1,355	4.7%	1,386	4.7%	1,302	4.4%
25 - 34	2,541	8.8%	2,596	8.8%	2,609	8.8%
35 - 44	3,917	13.5%	3,836	13.1%	3,725	12.5%
45 - 54	4,647	16.0%	4,545	15.5%	4,208	14.2%
55 - 64	4,445	15.3%	4,684	16.0%	4,918	16.5%
65 - 74	2,685	9.2%	2,887	9.8%	3,483	11.7%
75 - 84	1,679	5.8%	1,685	5.7%	1,778	6.0%
85+	518	1.8%	550	1.9%	585	2.0%

Race and Ethnicity	Census 2010		2012		2017	
	Number	Percent	Number	Percent	Number	Percent
White Alone	26,490	91.3%	26,609	90.7%	26,525	89.3%
Black Alone	1,474	5.1%	1,611	5.5%	1,906	6.4%
American Indian Alone	46	0.2%	49	0.2%	62	0.2%
Asian Alone	553	1.9%	570	1.9%	629	2.1%
Pacific Islander Alone	5	0.0%	6	0.0%	7	0.0%
Some Other Race Alone	115	0.4%	133	0.5%	180	0.6%
Two or More Races	346	1.2%	361	1.2%	409	1.4%
Hispanic Origin (Any Race)	560	1.9%	661	2.3%	915	3.1%

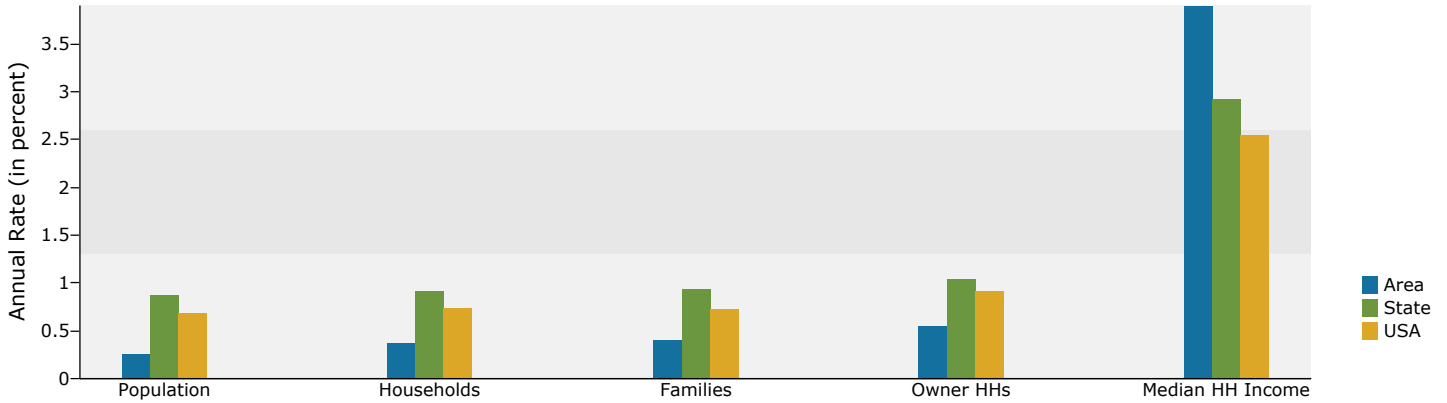
**Data Note:** Income is expressed in current dollars.

**Source:** U.S. Census Bureau, Census 2010 Summary File 1. Esri forecasts for 2012 and 2017.

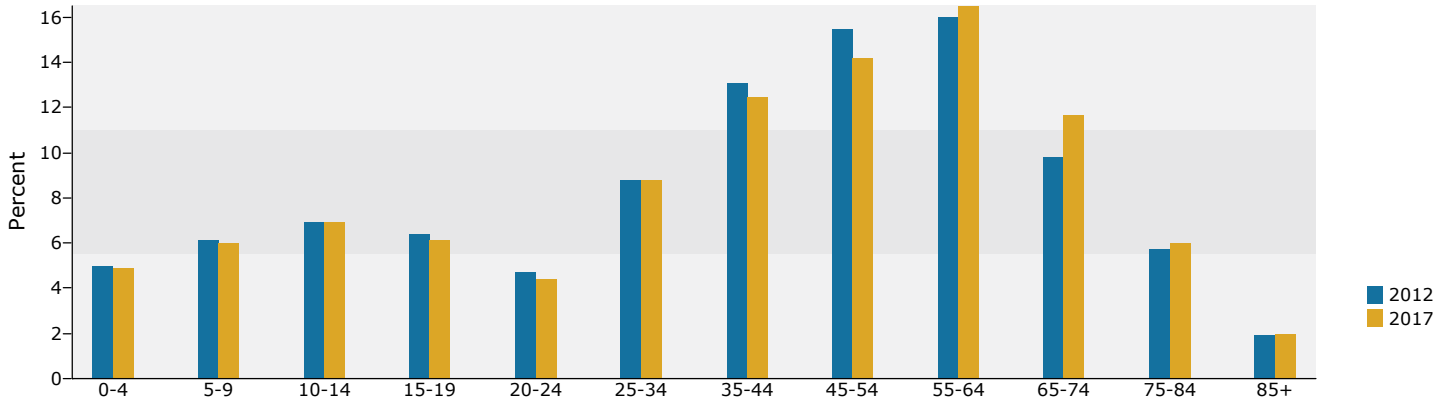
Daleville  
 STHY 220, Daleville, VA, 24083  
 Drive Time: 12 minutes

Latitude: 37.41283  
 Longitude: -79.91218

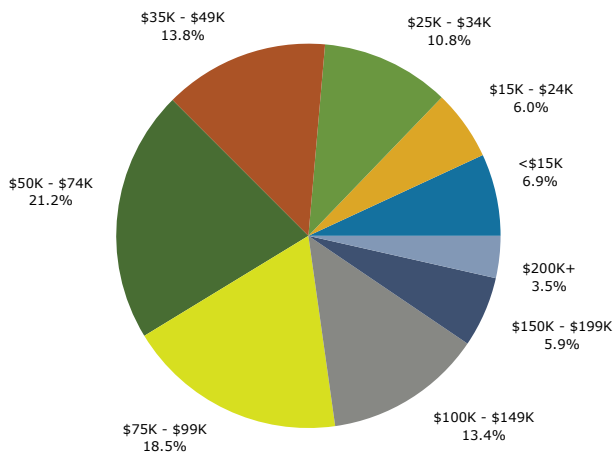
## Trends 2012-2017



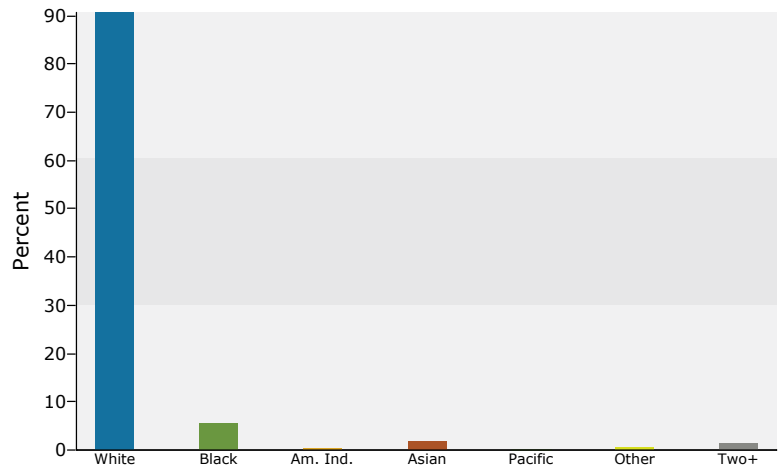
## Population by Age



## 2012 Household Income



## 2012 Population by Race



2012 Percent Hispanic Origin: 2.3%

Source: U.S. Census Bureau, Census 2010 Summary File 1. Esri forecasts for 2012 and 2017.



# Demographic and Income Profile

Daleville  
 STHY 220, Daleville, VA, 24083  
 Drive Time: 15 minutes

Latitude: 37.41283  
 Longitude: -79.91218

Summary	Census 2010	2012	2017
Population	61,700	62,315	63,325
Households	25,155	25,350	25,818
Families	17,108	17,078	17,414
Average Household Size	2.41	2.41	2.41
Owner Occupied Housing Units	19,023	18,619	19,125
Renter Occupied Housing Units	6,132	6,731	6,692
Median Age	42.5	43.0	43.9
Trends: 2012 - 2017 Annual Rate	Area	State	National
Population	0.32%	0.87%	0.68%
Households	0.37%	0.91%	0.74%
Families	0.39%	0.94%	0.72%
Owner HHs	0.54%	1.04%	0.91%
Median Household Income	2.45%	2.92%	2.55%

Households by Income	2012		2017	
	Number	Percent	Number	Percent
<\$15,000	2,310	9.1%	2,441	9.5%
\$15,000 - \$24,999	2,002	7.9%	1,603	6.2%
\$25,000 - \$34,999	3,218	12.7%	2,662	10.3%
\$35,000 - \$49,999	4,109	16.2%	3,573	13.8%
\$50,000 - \$74,999	5,720	22.6%	5,306	20.6%
\$75,000 - \$99,999	4,042	15.9%	5,684	22.0%
\$100,000 - \$149,999	2,527	10.0%	2,907	11.3%
\$150,000 - \$199,999	861	3.4%	1,070	4.1%
\$200,000+	561	2.2%	572	2.2%
Median Household Income	\$53,039		\$59,860	
Average Household Income	\$66,168		\$72,745	
Per Capita Income	\$27,508		\$30,267	

Population by Age	Census 2010		2012		2017	
	Number	Percent	Number	Percent	Number	Percent
0 - 4	3,547	5.7%	3,560	5.7%	3,589	5.7%
5 - 9	3,691	6.0%	3,686	5.9%	3,679	5.8%
10 - 14	3,884	6.3%	3,836	6.2%	3,877	6.1%
15 - 19	3,821	6.2%	3,674	5.9%	3,536	5.6%
20 - 24	3,169	5.1%	3,244	5.2%	3,036	4.8%
25 - 34	6,679	10.8%	6,845	11.0%	6,947	11.0%
35 - 44	8,219	13.3%	8,044	12.9%	7,869	12.4%
45 - 54	9,334	15.1%	9,119	14.6%	8,476	13.4%
55 - 64	8,894	14.4%	9,358	15.0%	9,841	15.5%
65 - 74	5,410	8.8%	5,805	9.3%	7,018	11.1%
75 - 84	3,631	5.9%	3,641	5.8%	3,855	6.1%
85+	1,419	2.3%	1,503	2.4%	1,604	2.5%

Race and Ethnicity	Census 2010		2012		2017	
	Number	Percent	Number	Percent	Number	Percent
White Alone	51,700	83.8%	51,851	83.2%	51,656	81.6%
Black Alone	6,514	10.6%	6,820	10.9%	7,453	11.8%
American Indian Alone	149	0.2%	155	0.2%	186	0.3%
Asian Alone	1,344	2.2%	1,378	2.2%	1,505	2.4%
Pacific Islander Alone	19	0.0%	20	0.0%	26	0.0%
Some Other Race Alone	957	1.6%	1,029	1.7%	1,292	2.0%
Two or More Races	1,017	1.6%	1,062	1.7%	1,208	1.9%
Hispanic Origin (Any Race)	2,545	4.1%	2,781	4.5%	3,561	5.6%

**Data Note:** Income is expressed in current dollars.

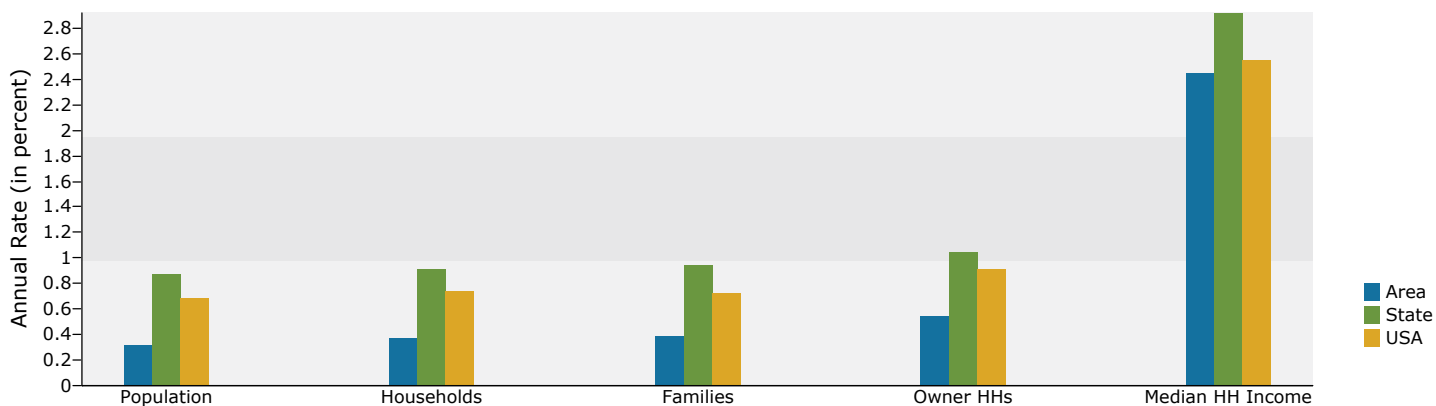
**Source:** U.S. Census Bureau, Census 2010 Summary File 1. Esri forecasts for 2012 and 2017.



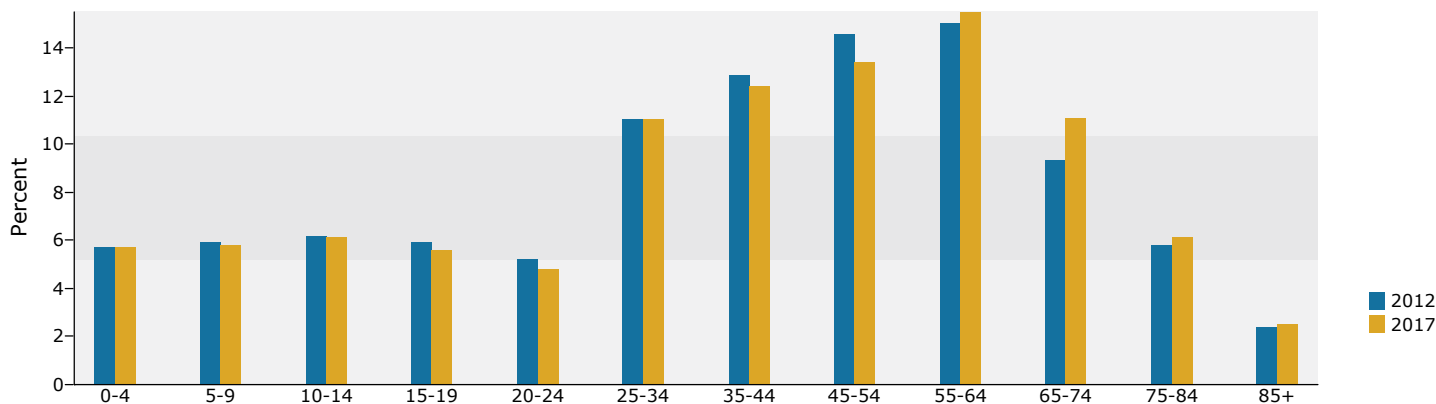
Daleville  
 STHY 220, Daleville, VA, 24083  
 Drive Time: 15 minutes

Latitude: 37.41283  
 Longitude: -79.91218

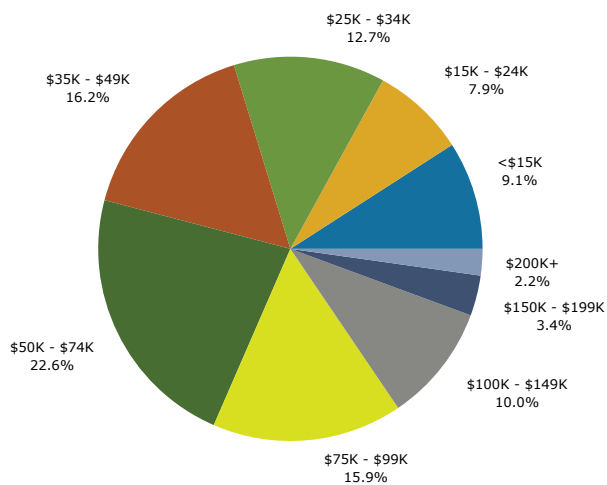
## Trends 2012-2017



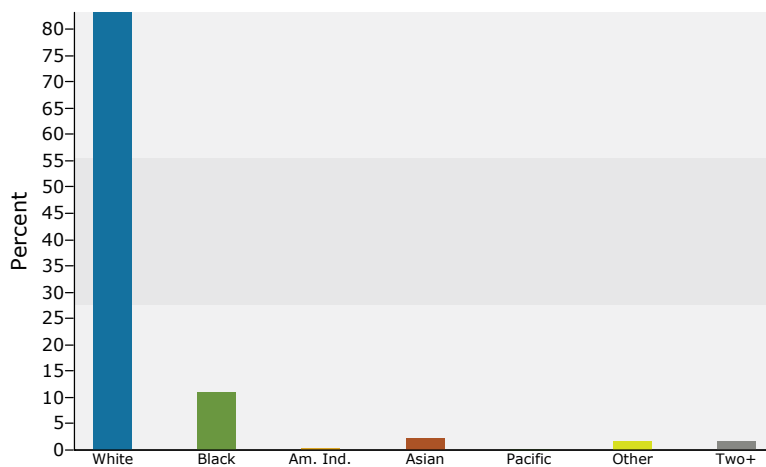
## Population by Age



## 2012 Household Income



## 2012 Population by Race



2012 Percent Hispanic Origin: 4.5%

Source: U.S. Census Bureau, Census 2010 Summary File 1. Esri forecasts for 2012 and 2017.