



**ROANOKE REGIONAL
PARTNERSHIP**

Westlake Submarket
Demographics
15-20 Minutes

TABLE OF CONTENTS

MARKET LOCATION MAP

MARKET PROFILE

APPENDIX A: MARKET DATA

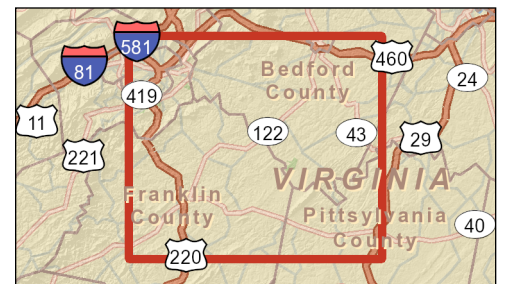
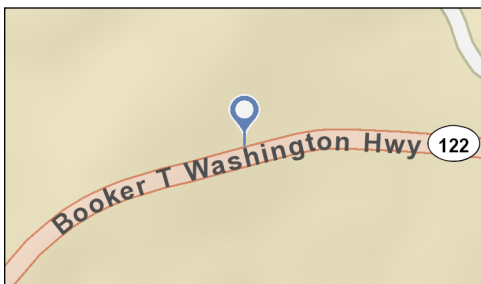
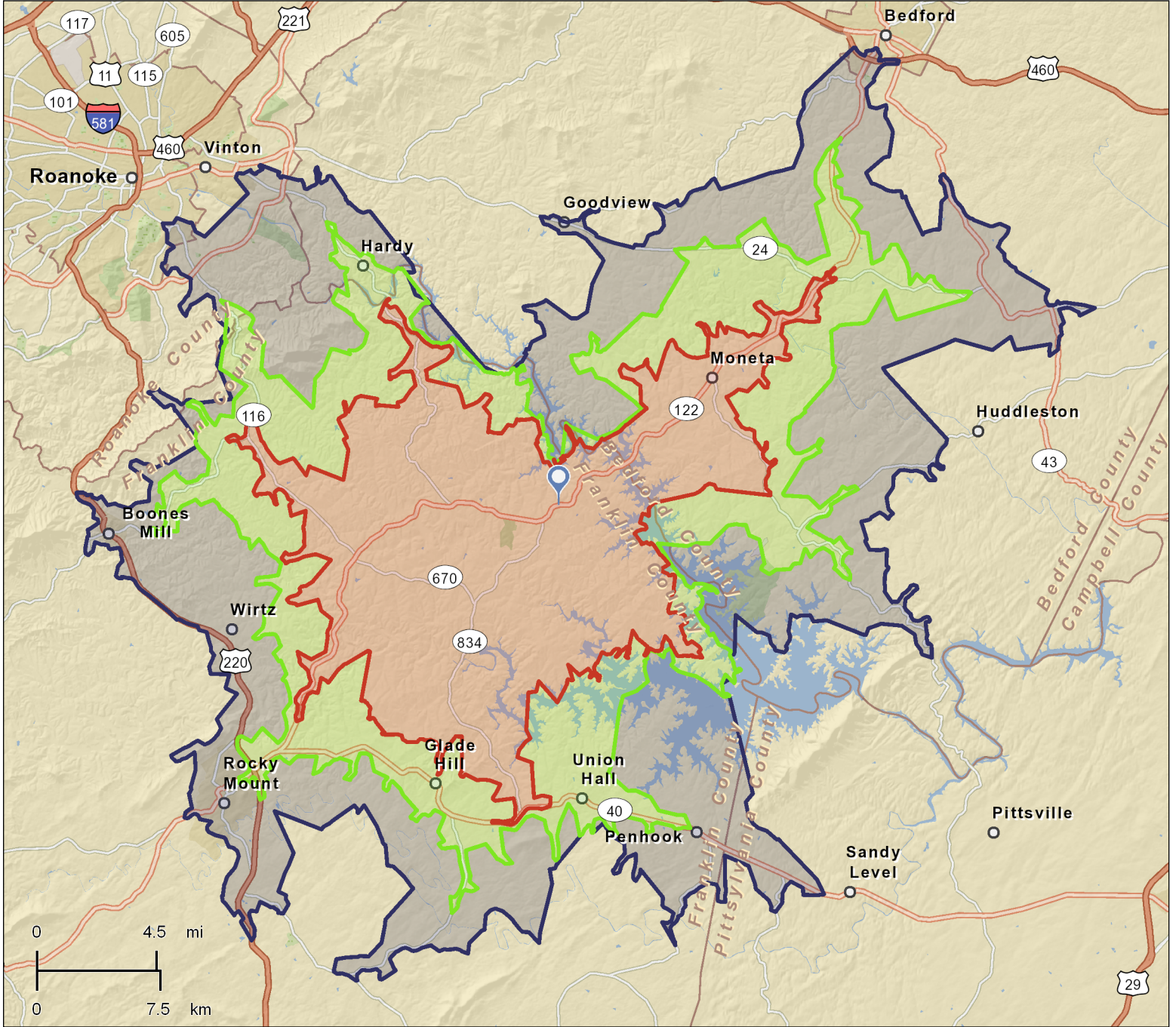


Market Location



Westlake
13989 STHY 122, Moneta, VA, 24121
Drive Time: 15, 20, 25 Minutes

Latitude: 37.12693
Longitude: -79.70415





Market Profile

Westlake
 13989 STHY 122, Moneta, VA, 24121
 Drive Time: 15 minutes

Latitude: 37.12693
 Longitude: -79.70415

	0 - 15 minutes	0 - 20 minutes	0 - 25 minutes
Population Summary			
2000 Total Population	9,359	17,657	41,581
2010 Total Population	12,070	22,151	48,661
2012 Total Population	12,189	22,362	49,164
2012 Group Quarters	71	89	513
2017 Total Population	12,547	22,981	50,481
2012-2017 Annual Rate	0.58%	0.55%	0.53%
Household Summary			
2000 Households	3,822	7,217	16,972
2000 Average Household Size	2.43	2.43	2.42
2010 Households	5,033	9,193	20,168
2010 Average Household Size	2.38	2.40	2.39
2012 Households	5,069	9,259	20,331
2012 Average Household Size	2.39	2.41	2.39
2017 Households	5,257	9,587	21,013
2017 Average Household Size	2.37	2.39	2.38
2012-2017 Annual Rate	0.73%	0.70%	0.66%
2010 Families	3,715	6,777	14,398
2010 Average Family Size	2.74	2.76	2.79
2012 Families	3,711	6,771	14,386
2012 Average Family Size	2.74	2.76	2.80
2017 Families	3,853	7,017	14,876
2017 Average Family Size	2.73	2.75	2.79
2012-2017 Annual Rate	0.75%	0.72%	0.67%
Housing Unit Summary			
2000 Housing Units	5,215	9,446	21,120
Owner Occupied Housing Units	62.6%	65.5%	66.2%
Renter Occupied Housing Units	10.7%	10.9%	14.2%
Vacant Housing Units	26.7%	23.6%	19.6%
2010 Housing Units	7,317	12,839	26,832
Owner Occupied Housing Units	56.9%	59.5%	60.0%
Renter Occupied Housing Units	11.8%	12.1%	15.1%
Vacant Housing Units	31.2%	28.4%	24.8%
2012 Housing Units	7,414	13,010	27,158
Owner Occupied Housing Units	55.3%	57.9%	58.3%
Renter Occupied Housing Units	13.1%	13.3%	16.6%
Vacant Housing Units	31.6%	28.8%	25.1%
2017 Housing Units	7,735	13,558	28,183
Owner Occupied Housing Units	55.4%	58.0%	58.4%
Renter Occupied Housing Units	12.6%	12.8%	16.1%
Vacant Housing Units	32.0%	29.3%	25.4%
Median Household Income			
2012	\$50,139	\$49,064	\$44,823
2017	\$56,982	\$55,619	\$50,832
Median Home Value			
2012	\$198,104	\$188,601	\$170,020
2017	\$257,726	\$236,313	\$200,851
Per Capita Income			
2012	\$30,412	\$29,307	\$26,179
2017	\$34,474	\$33,271	\$29,408
Median Age			
2010	48.1	47.5	46.0
2012	49.1	48.4	46.7
2017	50.9	50.2	48.3

Data Note: Household population includes persons not residing in group quarters. Average Household Size is the household population divided by total households. Persons in families include the householder and persons related to the householder by birth, marriage, or adoption. Per Capita Income represents the income received by all persons aged 15 years and over divided by the total population.

Source: U.S. Census Bureau, Census 2010 Summary File 1. Esri forecasts for 2012 and 2017. Esri converted Census 2000 data into 2010 geography.



Market Profile

Westlake
 13989 STHY 122, Moneta, VA, 24121
 Drive Time: 25 minutes

Latitude: 37.12693
 Longitude: -79.70415

	0 - 15 minutes	0 - 20 minutes	0 - 25 minutes
2012 Households by Income			
Household Income Base	5,069	9,259	20,331
<\$15,000	12.5%	13.2%	15.5%
\$15,000 - \$24,999	8.5%	8.9%	9.3%
\$25,000 - \$34,999	10.0%	10.7%	12.3%
\$35,000 - \$49,999	18.8%	18.0%	17.7%
\$50,000 - \$74,999	18.5%	18.7%	18.9%
\$75,000 - \$99,999	12.1%	11.7%	10.9%
\$100,000 - \$149,999	10.7%	10.5%	9.4%
\$150,000 - \$199,999	3.3%	3.1%	2.4%
\$200,000+	5.6%	5.2%	3.5%
Average Household Income	\$71,967	\$69,948	\$62,304
2017 Households by Income			
Household Income Base	5,257	9,587	21,013
<\$15,000	12.7%	13.5%	16.0%
\$15,000 - \$24,999	6.6%	6.9%	7.4%
\$25,000 - \$34,999	8.1%	8.8%	10.4%
\$35,000 - \$49,999	16.3%	15.5%	15.4%
\$50,000 - \$74,999	17.3%	17.5%	17.7%
\$75,000 - \$99,999	16.7%	16.3%	15.4%
\$100,000 - \$149,999	12.5%	12.3%	11.2%
\$150,000 - \$199,999	4.3%	3.9%	3.1%
\$200,000+	5.5%	5.2%	3.5%
Average Household Income	\$81,016	\$78,838	\$69,625
2012 Owner Occupied Housing Units by Value			
Total	4,102	7,531	15,835
<\$50,000	2.1%	2.2%	2.4%
\$50,000 - \$99,999	10.1%	11.1%	14.5%
\$100,000 - \$149,999	20.6%	22.1%	24.6%
\$150,000 - \$199,999	17.9%	18.9%	21.2%
\$200,000 - \$249,999	10.1%	10.8%	10.9%
\$250,000 - \$299,999	6.5%	6.0%	5.3%
\$300,000 - \$399,999	9.3%	8.1%	6.1%
\$400,000 - \$499,999	6.8%	6.0%	4.4%
\$500,000 - \$749,999	12.0%	10.2%	6.9%
\$750,000 - \$999,999	3.3%	3.3%	2.5%
\$1,000,000 +	1.2%	1.4%	1.1%
Average Home Value	\$288,396	\$275,407	\$239,172
2017 Owner Occupied Housing Units by Value			
Total	4,284	7,857	16,472
<\$50,000	1.3%	1.4%	1.7%
\$50,000 - \$99,999	6.5%	7.7%	11.3%
\$100,000 - \$149,999	12.2%	13.9%	17.2%
\$150,000 - \$199,999	15.6%	16.7%	19.5%
\$200,000 - \$249,999	13.2%	14.1%	14.6%
\$250,000 - \$299,999	8.2%	7.8%	7.3%
\$300,000 - \$399,999	9.2%	8.0%	6.4%
\$400,000 - \$499,999	9.4%	8.5%	6.3%
\$500,000 - \$749,999	19.1%	16.2%	11.0%
\$750,000 - \$999,999	4.1%	4.1%	3.3%
\$1,000,000 +	1.3%	1.5%	1.3%
Average Home Value	\$345,796	\$328,123	\$282,341

Data Note: Income represents the preceding year, expressed in current dollars. Household income includes wage and salary earnings, interest dividends, net rents, pensions, SSI and welfare payments, child support, and alimony.
Source: U.S. Census Bureau, Census 2010 Summary File 1. Esri forecasts for 2012 and 2017. Esri converted Census 2000 data into 2010 geography.



Market Profile

Westlake
 13989 STHY 122, Moneta, VA, 24121
 Drive Time: 25 minutes

Latitude: 37.12693
 Longitude: -79.70415

	0 - 15 minutes	0 - 20 minutes	0 - 25 minutes
2010 Population by Age			
Total	12,071	22,153	48,664
0 - 4	4.8%	4.9%	5.4%
5 - 9	5.0%	5.2%	5.4%
10 - 14	5.1%	5.4%	5.7%
15 - 24	9.4%	9.5%	10.1%
25 - 34	8.9%	9.1%	9.5%
35 - 44	12.2%	12.3%	12.4%
45 - 54	15.9%	15.9%	15.6%
55 - 64	17.8%	17.6%	16.3%
65 - 74	13.6%	13.1%	11.9%
75 - 84	5.8%	5.6%	5.9%
85 +	1.4%	1.5%	1.9%
18 +	81.7%	81.0%	79.9%
2012 Population by Age			
Total	12,187	22,363	49,162
0 - 4	4.7%	4.8%	5.3%
5 - 9	4.9%	5.1%	5.3%
10 - 14	5.0%	5.2%	5.5%
15 - 24	9.1%	9.2%	9.9%
25 - 34	9.0%	9.2%	9.6%
35 - 44	11.7%	11.8%	12.0%
45 - 54	15.3%	15.3%	15.0%
55 - 64	18.5%	18.3%	17.0%
65 - 74	14.5%	13.9%	12.6%
75 - 84	5.8%	5.6%	5.8%
85 +	1.5%	1.6%	1.9%
18 +	82.3%	81.5%	80.4%
2017 Population by Age			
Total	12,547	22,979	50,479
0 - 4	4.6%	4.7%	5.2%
5 - 9	4.7%	4.9%	5.1%
10 - 14	4.9%	5.1%	5.5%
15 - 24	8.3%	8.4%	9.1%
25 - 34	8.8%	9.0%	9.5%
35 - 44	11.1%	11.2%	11.4%
45 - 54	13.8%	13.8%	13.6%
55 - 64	19.0%	18.8%	17.5%
65 - 74	17.1%	16.5%	14.9%
75 - 84	6.1%	5.9%	6.1%
85 +	1.6%	1.6%	2.0%
18 +	82.9%	82.2%	81.0%
2010 Population by Sex			
Males	6,052	11,049	23,942
Females	6,018	11,102	24,719
2012 Population by Sex			
Males	6,127	11,185	24,246
Females	6,062	11,177	24,918
2017 Population by Sex			
Males	6,322	11,520	24,927
Females	6,225	11,461	25,554

Source: U.S. Census Bureau, Census 2010 Summary File 1. Esri forecasts for 2012 and 2017. Esri converted Census 2000 data into 2010 geography.

June 21, 2013

Made with Esri Business Analyst



Market Profile

Westlake
 13989 STHY 122, Moneta, VA, 24121
 Drive Time: 25 minutes

Latitude: 37.12693
 Longitude: -79.70415

	0 - 15 minutes	0 - 20 minutes	0 - 25 minutes
2010 Population by Race/Ethnicity			
Total	12,070	22,152	48,661
White Alone	93.8%	93.5%	90.2%
Black Alone	4.0%	4.1%	6.7%
American Indian Alone	0.3%	0.3%	0.3%
Asian Alone	0.5%	0.5%	0.5%
Pacific Islander Alone	0.0%	0.0%	0.0%
Some Other Race Alone	0.4%	0.5%	0.8%
Two or More Races	0.9%	1.0%	1.4%
Hispanic Origin	1.5%	1.7%	2.2%
Diversity Index	14.4	15.4	21.7
2012 Population by Race/Ethnicity			
Total	12,189	22,361	49,163
White Alone	93.5%	93.1%	89.7%
Black Alone	4.2%	4.4%	7.0%
American Indian Alone	0.3%	0.3%	0.3%
Asian Alone	0.6%	0.5%	0.6%
Pacific Islander Alone	0.0%	0.0%	0.0%
Some Other Race Alone	0.4%	0.6%	0.9%
Two or More Races	0.9%	1.1%	1.5%
Hispanic Origin	1.7%	1.9%	2.4%
Diversity Index	15.3	16.4	22.8
2017 Population by Race/Ethnicity			
Total	12,546	22,981	50,481
White Alone	92.9%	92.3%	88.7%
Black Alone	4.5%	4.7%	7.4%
American Indian Alone	0.4%	0.3%	0.3%
Asian Alone	0.7%	0.6%	0.7%
Pacific Islander Alone	0.0%	0.0%	0.0%
Some Other Race Alone	0.6%	0.8%	1.2%
Two or More Races	1.0%	1.2%	1.7%
Hispanic Origin	2.1%	2.5%	3.2%
Diversity Index	17.2	18.7	25.6
2010 Population by Relationship and Household Type			
Total	12,070	22,150	48,661
In Households	99.4%	99.6%	98.9%
In Family Households	86.3%	86.4%	84.7%
Householder	31.1%	30.8%	29.7%
Spouse	25.9%	25.6%	23.7%
Child	24.5%	25.3%	26.4%
Other relative	2.8%	2.6%	2.8%
Nonrelative	2.1%	2.0%	2.1%
In Nonfamily Households	13.1%	13.2%	14.2%
In Group Quarters	0.6%	0.4%	1.1%
Institutionalized Population	0.6%	0.3%	0.8%
Noninstitutionalized Population	0.0%	0.1%	0.2%

Data Note: Persons of Hispanic Origin may be of any race. The Diversity Index measures the probability that two people from the same area will be from different race/ethnic groups.

Source: U.S. Census Bureau, Census 2010 Summary File 1. Esri forecasts for 2012 and 2017. Esri converted Census 2000 data into 2010 geography.



Market Profile

Westlake
 13989 STHY 122, Moneta, VA, 24121
 Drive Time: 25 minutes

Latitude: 37.12693
 Longitude: -79.70415

	0 - 15 minutes	0 - 20 minutes	0 - 25 minutes
2010 Households by Type			
Total	5,033	9,193	20,168
Households with 1 Person	21.6%	21.7%	23.8%
Households with 2+ People	78.4%	78.3%	76.2%
Family Households	73.8%	73.7%	71.4%
Husband-wife Families	61.6%	61.2%	57.0%
With Related Children	17.4%	18.0%	17.9%
Other Family (No Spouse Present)	12.3%	12.5%	14.4%
Other Family with Male Householder	4.4%	4.2%	4.3%
With Related Children	2.4%	2.3%	2.5%
Other Family with Female Householder	7.8%	8.3%	10.1%
With Related Children	4.8%	5.0%	6.4%
Nonfamily Households	4.5%	4.6%	4.8%
All Households with Children	24.9%	25.8%	27.3%
Multigenerational Households	3.1%	3.0%	3.3%
Unmarried Partner Households	5.9%	5.8%	6.0%
Male-female	5.2%	5.1%	5.3%
Same-sex	0.7%	0.7%	0.7%
2010 Households by Size			
Total	5,033	9,193	20,167
1 Person Household	21.6%	21.7%	23.8%
2 Person Household	46.9%	45.9%	42.9%
3 Person Household	14.9%	15.2%	15.8%
4 Person Household	10.2%	10.6%	10.8%
5 Person Household	4.1%	4.3%	4.3%
6 Person Household	1.6%	1.5%	1.6%
7 + Person Household	0.7%	0.7%	0.9%
2010 Households by Tenure and Mortgage Status			
Total	5,033	9,193	20,168
Owner Occupied	82.8%	83.2%	79.9%
Owned with a Mortgage/Loan	53.9%	53.8%	50.8%
Owned Free and Clear	28.8%	29.3%	29.1%
Renter Occupied	17.2%	16.8%	20.1%

Data Note: Households with children include any households with people under age 18, related or not. Multigenerational households are families with 3 or more parent-child relationships. Unmarried partner households are usually classified as nonfamily households unless there is another member of the household related to the householder. Multigenerational and unmarried partner households are reported only to the tract level. Esri estimated block group data, which is used to estimate polygons or non-standard geography.

Source: U.S. Census Bureau, Census 2010 Summary File 1. Esri forecasts for 2012 and 2017. Esri converted Census 2000 data into 2010 geography.



Demographic and Income Comparison Profile

Westlake
13989 STHY 122, Moneta, VA, 24121
Drive Time: 15 minutes

Latitude: 37.12693
Longitude: -79.70415

	0 - 15 minutes	0 - 20 minutes	0 - 25 minutes
Census 2010 Summary			
Population	12,070	22,151	48,661
Households	5,033	9,193	20,168
Families	3,715	6,777	14,398
Average Household Size	2.38	2.40	2.39
Owner Occupied Housing Units	4,166	7,644	16,107
Renter Occupied Housing Units	867	1,549	4,061
Median Age	48.1	47.5	46.0
2012 Summary			
Population	12,189	22,362	49,164
Households	5,069	9,259	20,331
Families	3,711	6,771	14,386
Average Household Size	2.39	2.41	2.39
Owner Occupied Housing Units	4,102	7,531	15,835
Renter Occupied Housing Units	968	1,729	4,496
Median Age	49.1	48.4	46.7
Median Household Income	\$50,139	\$49,064	\$44,823
Average Household Income	\$71,967	\$69,948	\$62,304
2017 Summary			
Population	12,547	22,981	50,481
Households	5,257	9,587	21,013
Families	3,853	7,017	14,876
Average Household Size	2.37	2.39	2.38
Owner Occupied Housing Units	4,284	7,857	16,472
Renter Occupied Housing Units	973	1,730	4,541
Median Age	50.9	50.2	48.3
Median Household Income	\$56,982	\$55,619	\$50,832
Average Household Income	\$81,016	\$78,838	\$69,625
Trends: 2012-2017 Annual Rate			
Population	0.58%	0.55%	0.53%
Households	0.73%	0.70%	0.66%
Families	0.75%	0.72%	0.67%
Owner Households	0.87%	0.85%	0.79%
Median Household Income	2.59%	2.54%	2.55%

Source: U.S. Census Bureau, Census 2010 Summary File 1. Esri forecasts for 2012 and 2017.

June 21, 2013

Made with Esri Business Analyst



Demographic and Income Comparison Profile

Westlake
 13989 STHY 122, Moneta, VA, 24121
 Drive Time: 25 minutes

Latitude: 37.12693
 Longitude: -79.70415

2012 Households by Income	0 - 15 minutes		0 - 20 minutes		0 - 25 minutes	
	Number	Percent	Number	Percent	Number	Percent
<\$15,000	633	12.5%	1,219	13.2%	3,152	15.5%
\$15,000 - \$24,999	431	8.5%	826	8.9%	1,897	9.3%
\$25,000 - \$34,999	507	10.0%	992	10.7%	2,499	12.3%
\$35,000 - \$49,999	955	18.8%	1,669	18.0%	3,597	17.7%
\$50,000 - \$74,999	938	18.5%	1,736	18.7%	3,848	18.9%
\$75,000 - \$99,999	612	12.1%	1,079	11.7%	2,222	10.9%
\$100,000 - \$149,999	540	10.7%	971	10.5%	1,913	9.4%
\$150,000 - \$199,000	169	3.3%	286	3.1%	492	2.4%
\$200,000+	283	5.6%	482	5.2%	712	3.5%
Median Household Income	\$50,139		\$49,064		\$44,823	
Average Household Income	\$71,967		\$69,948		\$62,304	
Per Capita Income	\$30,412		\$29,307		\$26,179	

2017 Households by Income	0 - 15 minutes		0 - 20 minutes		0 - 25 minutes	
	Number	Percent	Number	Percent	Number	Percent
<\$15,000	670	12.7%	1,292	13.5%	3,353	16.0%
\$15,000 - \$24,999	346	6.6%	666	6.9%	1,553	7.4%
\$25,000 - \$34,999	426	8.1%	846	8.8%	2,177	10.4%
\$35,000 - \$49,999	855	16.3%	1,485	15.5%	3,239	15.4%
\$50,000 - \$74,999	911	17.3%	1,677	17.5%	3,719	17.7%
\$75,000 - \$99,999	879	16.7%	1,561	16.3%	3,229	15.4%
\$100,000 - \$149,999	655	12.5%	1,182	12.3%	2,348	11.2%
\$150,000 - \$199,000	224	4.3%	378	3.9%	651	3.1%
\$200,000+	290	5.5%	499	5.2%	744	3.5%
Median Household Income	\$56,982		\$55,619		\$50,832	
Average Household Income	\$81,016		\$78,838		\$69,625	
Per Capita Income	\$34,474		\$33,271		\$29,408	

Data Note: Income is expressed in current dollars.
Source: U.S. Census Bureau, Census 2010 Summary File 1. Esri forecasts for 2012 and 2017.



Demographic and Income Comparison Profile

Westlake
 13989 STHY 122, Moneta, VA, 24121
 Drive Time: 25 minutes

Latitude: 37.12693
 Longitude: -79.70415

2010 Population by Age	0 - 15 minutes		0 - 20 minutes		0 - 25 minutes	
	Number	Percent	Number	Percent	Number	Percent
Age 0 - 4	580	4.8%	1,092	4.9%	2,608	5.4%
Age 5 - 9	600	5.0%	1,154	5.2%	2,605	5.4%
Age 10 - 14	618	5.1%	1,193	5.4%	2,769	5.7%
Age 15 - 19	639	5.3%	1,203	5.4%	2,785	5.7%
Age 20 - 24	494	4.1%	897	4.0%	2,134	4.4%
Age 25 - 34	1,077	8.9%	2,015	9.1%	4,637	9.5%
Age 35 - 44	1,471	12.2%	2,714	12.3%	6,048	12.4%
Age 45 - 54	1,916	15.9%	3,515	15.9%	7,581	15.6%
Age 55 - 64	2,154	17.8%	3,894	17.6%	7,956	16.3%
Age 65 - 74	1,643	13.6%	2,900	13.1%	5,777	11.9%
Age 75 - 84	704	5.8%	1,248	5.6%	2,851	5.9%
Age 85+	174	1.4%	326	1.5%	910	1.9%

2012 Population by Age	Number		Percent		Number		Percent	
	Number	Percent	Number	Percent	Number	Percent	Number	Percent
Age 0 - 4	576	4.7%	1,084	4.8%	2,606	5.3%	2,606	5.3%
Age 5 - 9	593	4.9%	1,143	5.1%	2,593	5.3%	2,593	5.3%
Age 10 - 14	607	5.0%	1,170	5.2%	2,727	5.5%	2,727	5.5%
Age 15 - 19	606	5.0%	1,142	5.1%	2,660	5.4%	2,660	5.4%
Age 20 - 24	503	4.1%	914	4.1%	2,183	4.4%	2,183	4.4%
Age 25 - 34	1,096	9.0%	2,051	9.2%	4,737	9.6%	4,737	9.6%
Age 35 - 44	1,427	11.7%	2,635	11.8%	5,892	12.0%	5,892	12.0%
Age 45 - 54	1,862	15.3%	3,418	15.3%	7,384	15.0%	7,384	15.0%
Age 55 - 64	2,258	18.5%	4,088	18.3%	8,355	17.0%	8,355	17.0%
Age 65 - 74	1,764	14.5%	3,115	13.9%	6,204	12.6%	6,204	12.6%
Age 75 - 84	708	5.8%	1,256	5.6%	2,863	5.8%	2,863	5.8%
Age 85+	187	1.5%	347	1.6%	958	1.9%	958	1.9%

2017 Population by Age	Number		Percent		Number		Percent	
	Number	Percent	Number	Percent	Number	Percent	Number	Percent
Age 0 - 4	577	4.6%	1,085	4.7%	2,624	5.2%	2,624	5.2%
Age 5 - 9	588	4.7%	1,132	4.9%	2,588	5.1%	2,588	5.1%
Age 10 - 14	612	4.9%	1,180	5.1%	2,764	5.5%	2,764	5.5%
Age 15 - 19	579	4.6%	1,092	4.8%	2,558	5.1%	2,558	5.1%
Age 20 - 24	466	3.7%	846	3.7%	2,033	4.0%	2,033	4.0%
Age 25 - 34	1,109	8.8%	2,074	9.0%	4,815	9.5%	4,815	9.5%
Age 35 - 44	1,392	11.1%	2,568	11.2%	5,766	11.4%	5,766	11.4%
Age 45 - 54	1,727	13.8%	3,169	13.8%	6,872	13.6%	6,872	13.6%
Age 55 - 64	2,387	19.0%	4,322	18.8%	8,835	17.5%	8,835	17.5%
Age 65 - 74	2,148	17.1%	3,793	16.5%	7,542	14.9%	7,542	14.9%
Age 75 - 84	760	6.1%	1,346	5.9%	3,064	6.1%	3,064	6.1%
Age 85+	202	1.6%	372	1.6%	1,018	2.0%	1,018	2.0%

Source: U.S. Census Bureau, Census 2010 Summary File 1. Esri forecasts for 2012 and 2017.



Demographic and Income Comparison Profile

Westlake
 13989 STHY 122, Moneta, VA, 24121
 Drive Time: 25 minutes

Latitude: 37.12693
 Longitude: -79.70415

2010 Race and Ethnicity	0 - 15 minutes		0 - 20 minutes		0 - 25 minutes	
	Number	Percent	Number	Percent	Number	Percent
White Alone	11,324	93.8%	20,714	93.5%	43,885	90.2%
Black Alone	487	4.0%	919	4.1%	3,272	6.7%
American Indian Alone	34	0.3%	61	0.3%	132	0.3%
Asian Alone	62	0.5%	104	0.5%	263	0.5%
Pacific Islander Alone	4	0.0%	6	0.0%	12	0.0%
Some Other Race Alone	47	0.4%	117	0.5%	408	0.8%
Two or More Races	112	0.9%	231	1.0%	689	1.4%
Hispanic Origin (Any Race)	183	1.5%	385	1.7%	1,060	2.2%

2012 Race and Ethnicity	Number		Percent		Number		Percent	
	Number	Percent	Number	Percent	Number	Percent	Number	Percent
White Alone	11,395	93.5%	20,825	93.1%	44,115	89.7%		
Black Alone	514	4.2%	977	4.4%	3,427	7.0%		
American Indian Alone	38	0.3%	67	0.3%	141	0.3%		
Asian Alone	70	0.6%	114	0.5%	284	0.6%		
Pacific Islander Alone	4	0.0%	6	0.0%	14	0.0%		
Some Other Race Alone	53	0.4%	130	0.6%	453	0.9%		
Two or More Races	115	0.9%	242	1.1%	729	1.5%		
Hispanic Origin (Any Race)	204	1.7%	433	1.9%	1,197	2.4%		

2017 Race and Ethnicity	Number		Percent		Number		Percent	
	Number	Percent	Number	Percent	Number	Percent	Number	Percent
White Alone	11,649	92.9%	21,217	92.3%	44,783	88.7%		
Black Alone	564	4.5%	1,087	4.7%	3,719	7.4%		
American Indian Alone	44	0.4%	78	0.3%	166	0.3%		
Asian Alone	85	0.7%	138	0.6%	340	0.7%		
Pacific Islander Alone	5	0.0%	8	0.0%	19	0.0%		
Some Other Race Alone	70	0.6%	174	0.8%	610	1.2%		
Two or More Races	129	1.0%	279	1.2%	844	1.7%		
Hispanic Origin (Any Race)	267	2.1%	570	2.5%	1,592	3.2%		

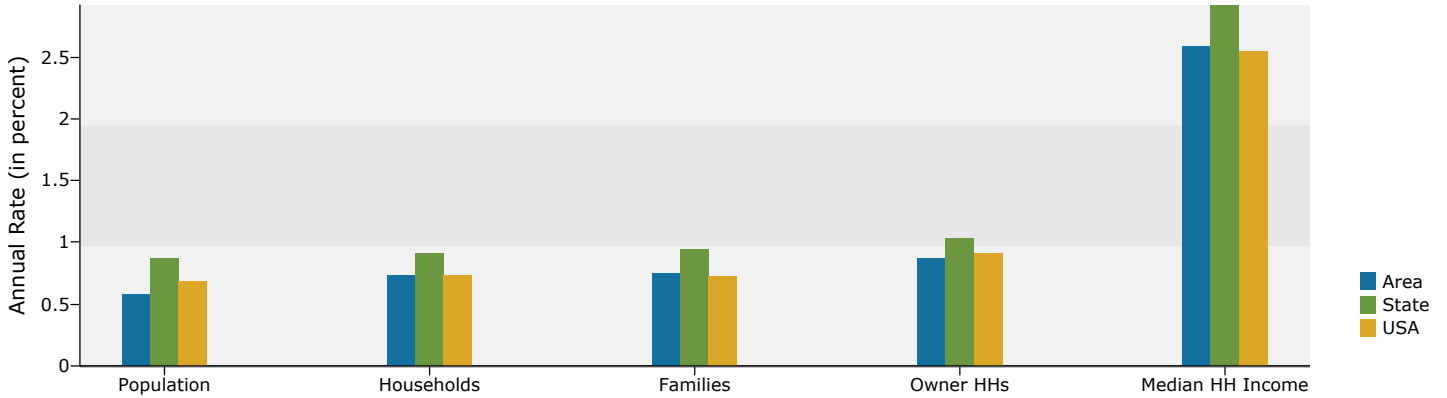
Source: U.S. Census Bureau, Census 2010 Summary File 1. Esri forecasts for 2012 and 2017.

Westlake
 13989 STHY 122, Moneta, VA, 24121
 Drive Time: 25 minutes

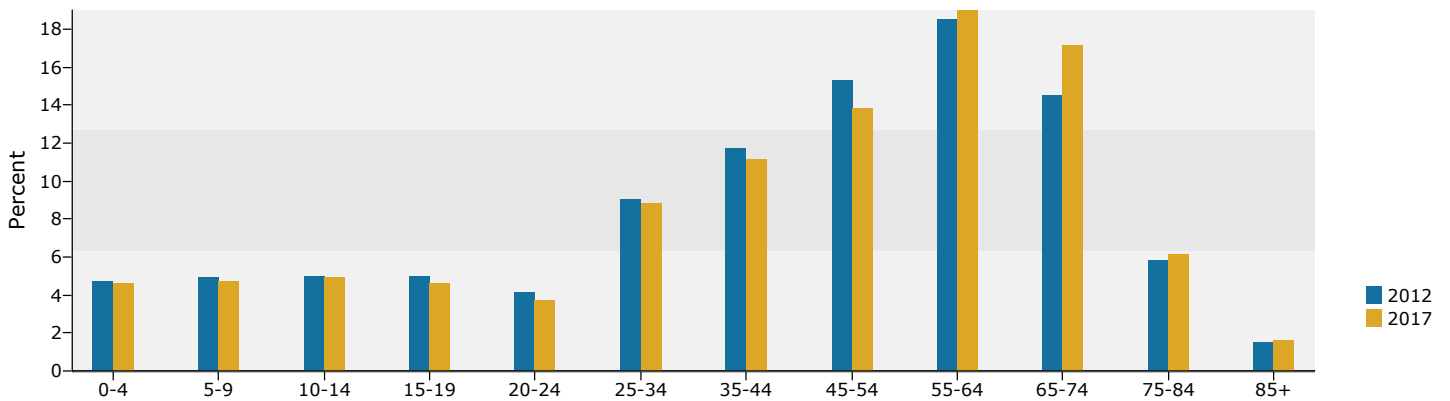
Latitude: 37.12693
 Longitude: -79.70415

0 - 15 minutes

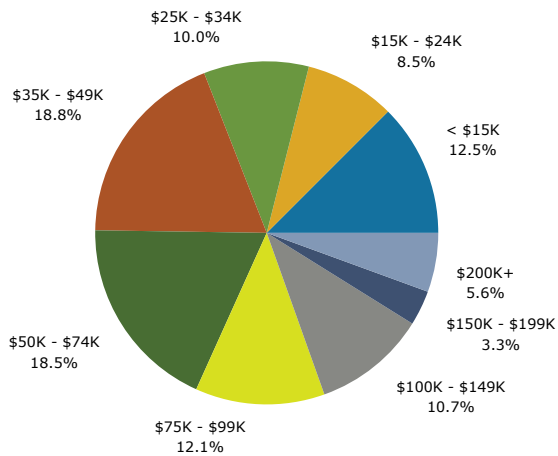
Trends 2012-2017



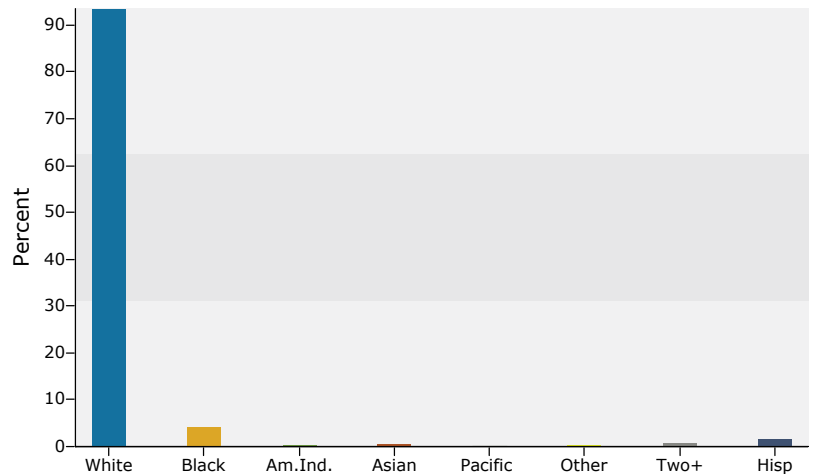
Population by Age



2012 Household Income



2012 Population by Race



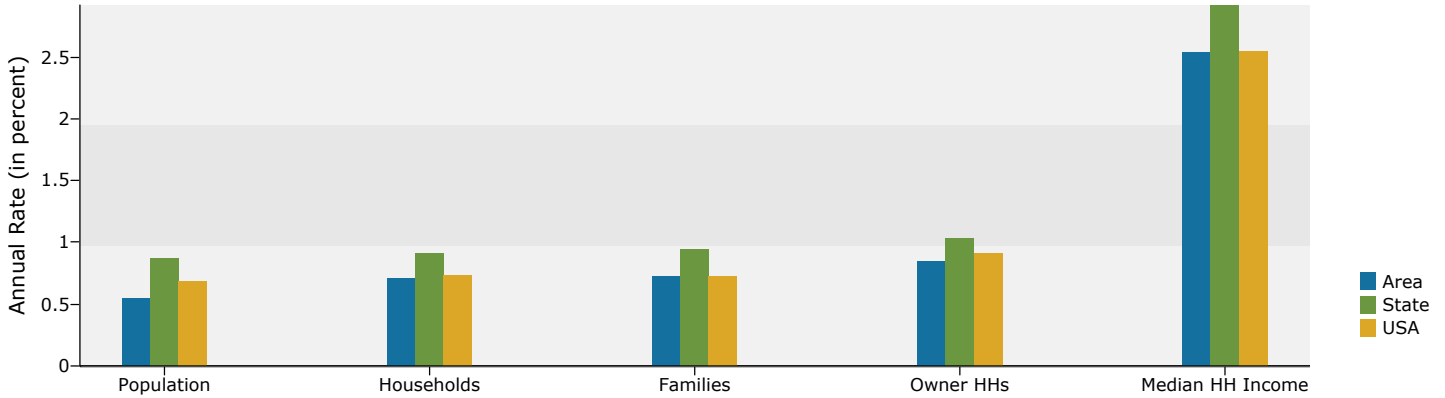
Source: U.S. Census Bureau, Census 2010 Summary File 1. Esri forecasts for 2012 and 2017.

Westlake
 13989 STHY 122, Moneta, VA, 24121
 Drive Time: 20 minutes

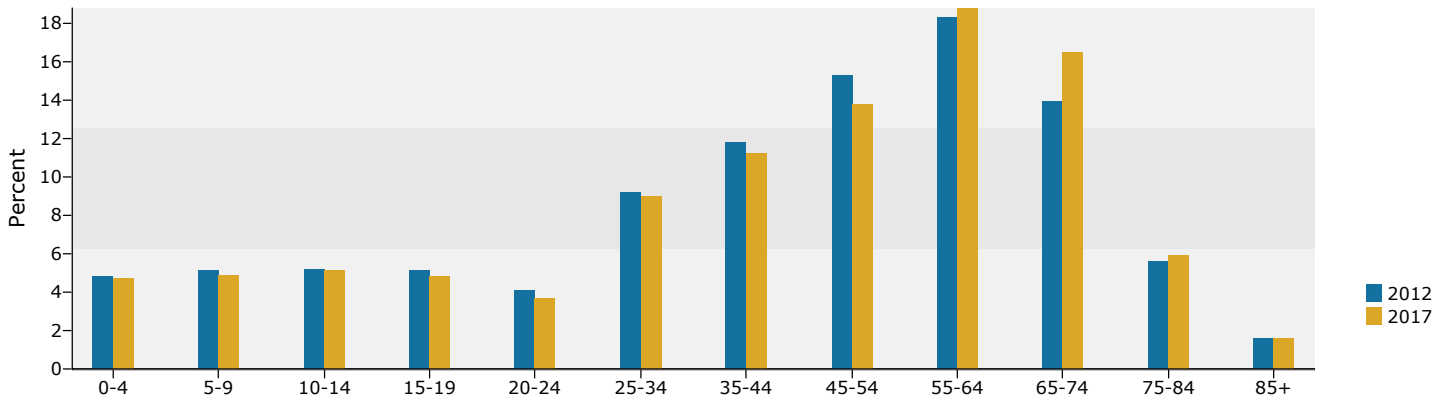
Latitude: 37.12693
 Longitude: -79.70415

0 - 20 minutes

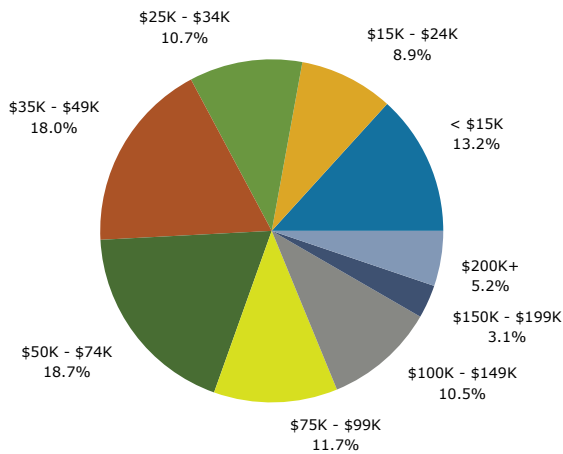
Trends 2012-2017



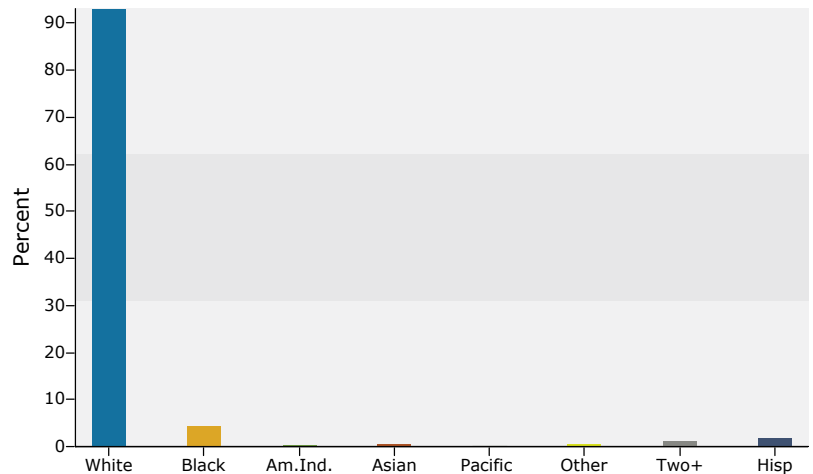
Population by Age



2012 Household Income



2012 Population by Race



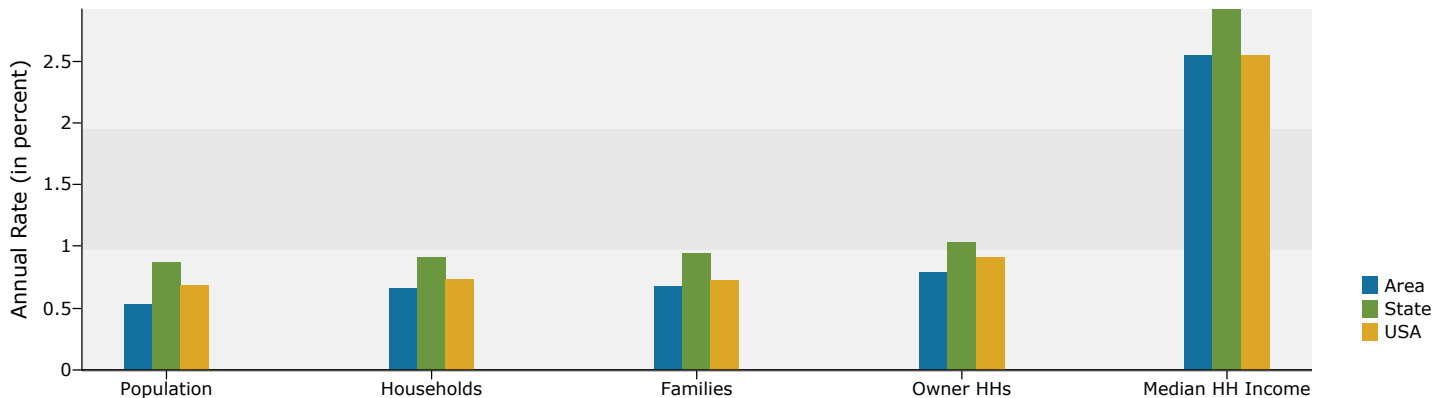
Source: U.S. Census Bureau, Census 2010 Summary File 1. Esri forecasts for 2012 and 2017.

Westlake
 13989 STHY 122, Moneta, VA, 24121
 Drive Time: 25 minutes

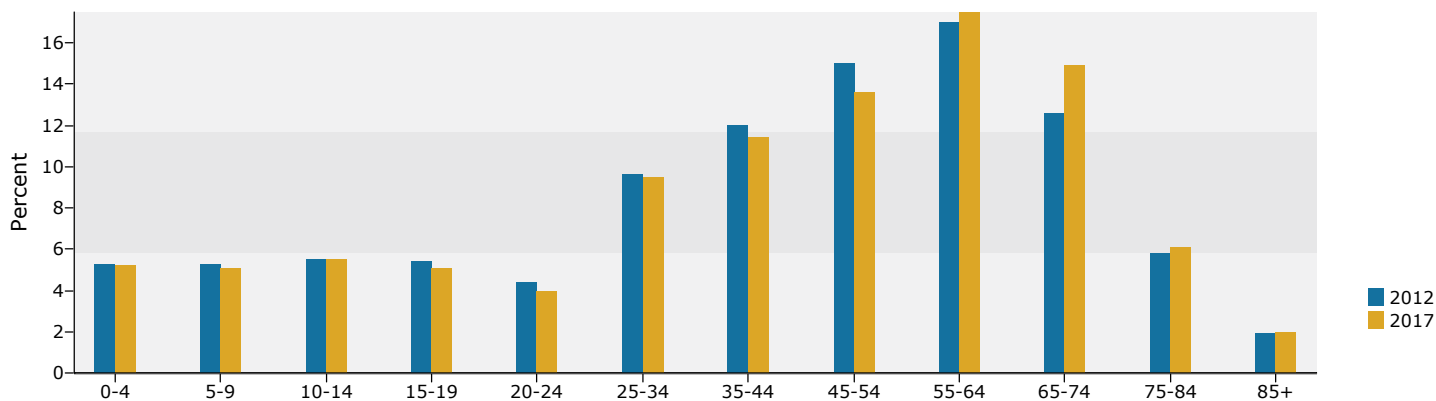
Latitude: 37.12693
 Longitude: -79.70415

0 - 25 minutes

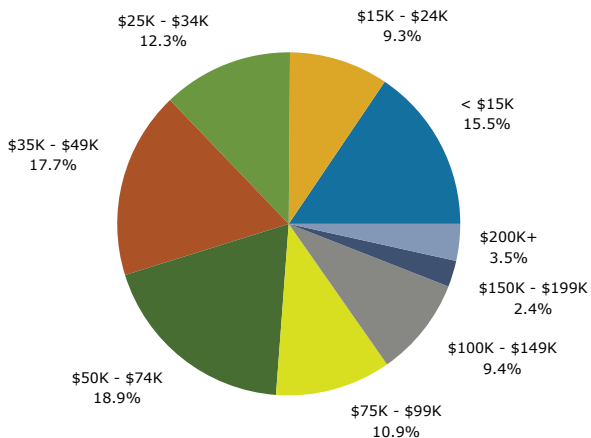
Trends 2012-2017



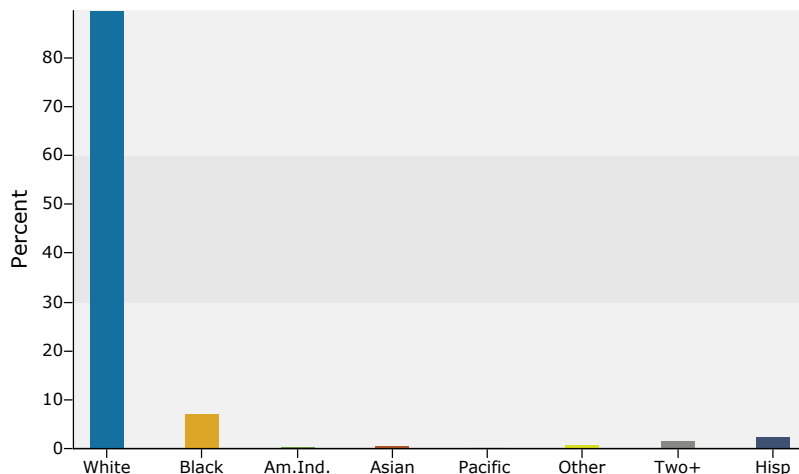
Population by Age



2012 Household Income



2012 Population by Race



Source: U.S. Census Bureau, Census 2010 Summary File 1. Esri forecasts for 2012 and 2017.